

# KÜRESEL VANA ( ÇELİK )

BALL VALVE (STEEL)

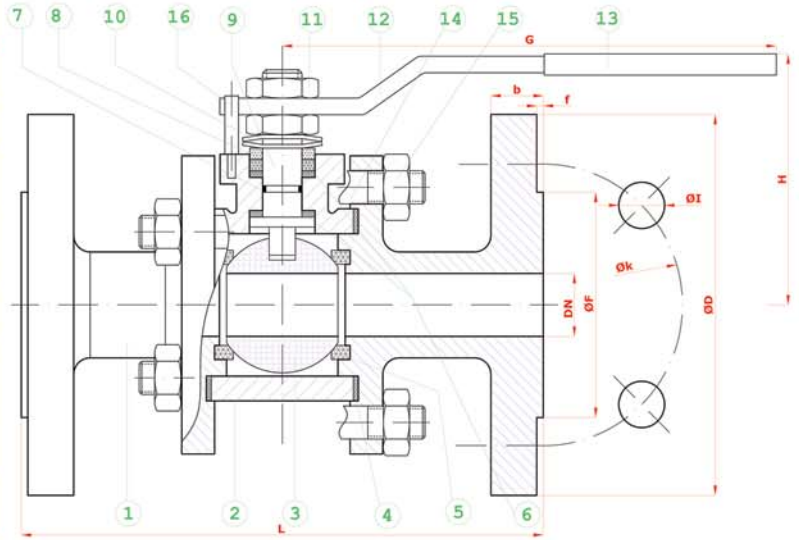
TAM GEÇİŞLİ / FLANŞLI  
FULL BORE / FLANGED

**TİP ( TYPE ) : BKV - FL - TG**  
**DN 15 - DN 250**

Boyutlar	Dimensions	: TS 3148 // EN 558-1
Bağlantılar	Connections	: FLANŞLI / FLANGED PN 16; DIN 2533 // EN 1092-1 FLANŞLI / FLANGED PN 40; DIN 2545 // EN 1092-2
Çalışma Basıncı	Working Pressure	: PN 16 - PN 40
Çalışma Sıcaklığı	Working Temperature	: -30 °C // +180°C
Kullanım Alanları	Usage Areas	: Su, Sıcak Su, Buhar, Basıncılı Hava Water, Hot Water, Steam, Pressurized Air



MALZEME BİLGİSİ MATERIAL DATA			
PARÇA NO ITEM NO	ADET PCS	PARÇA ADI ITEM DESCRIPTION	MALZEME MATERIAL
16	1	STOPLAMA PİMİ STOPPING PIM	ST 42 Gal.
15	8	SOMUN NUT	5.6
14	4	SAPLAMA STUD	CK 35 - CK 45
13	1	PLASTİK KAPLAMA PLASTIC COVERING	PVC
12	1	KÜRE HAREKET KOLU BALL ACTION HANDLE	st 37
11	2	KONTRA SOMUN COUNTER NUT	5,6 Gal.
10	2	ÇANAK PUL BOWL WASHER	50 Cr V 4
9	1	HAREKET MİLİ ACTION SPINDLE	1.4021
8	1	BASKI RİNGİ PRESSURE RING	MS 58
7	1	MİL O-RİNG SPINDLE O-RING	VİTON
6	2	BOĞAZ SIZDIRMAZLIK NECK TIGHTNESS ELEMENT	PTFE-T eflon
5	2	KÜRE SIZDIRMAZLIK BALL TIGHTNESS ELEMENT	PTFE-T eflon
4	2	GÖVDE SIZDIRMAZLIK BODY TIGHTNESS ELEMENT	PTFE-T eflon
3	1	KÜRE BALL	1.4301 / 1.4086
2	1	GÖVDE BODY	A 216 WCB
1	2	KAPAK COVER	St 37-2



TİP ( TYPE )	BOYUTLAR ( DIMENSIONS )								BAĞLANTI ÖLÇÜLERİ ( CONNECTION SIZES )											
	PN 16 - 40								PN 16				PN 40							
BKV FL-TG	L	G	H	DN	f	D	k	Hole Unit	I	F	b	Kg	D	k	Hole Unit	I	F	b	Kg	
DN 15	130	150	75	15	2	95	65	4	14	45	14	2,40	95	65	4	14	45	16	2,70	
DN 20	150	150	83	20	2	105	75	4	14	58	16	3,30	105	75	4	14	58	18	4,00	
DN 25	160	180	90	25	2	115	85	4	14	68	16	4,50	115	85	4	14	68	18	4,80	
DN 32	180	230	95	32	2	140	100	4	18	78	16	5,80	140	100	4	18	78	18	7,00	
DN 40	200	275	115	40	3	150	110	4	18	88	16	7,50	150	110	4	18	88	18	9,70	
DN 50	230	275	120	50	3	165	125	4	18	102	18	11,50	165	125	4	18	102	20	12,56	
DN 65	290	320	135	65	3	185	145	4	18	122	18	17,00	185	145	8	18	122	22	19,20	
DN 80	310	380	150	80	3	200	160	8	18	138	20	24,80	200	160	8	18	138	24	26,70	
DN 100	350	450	170	100	3	220	180	8	18	158	20	32,00	235	190	8	22	162	24	41,50	
DN 125	400	450	200	125	3	250	210	8	18	188	22	40,00	270	220	8	26	188	26	50,00	
DN 150	450	650	235	150	3	285	240	8	22	212	22	68,50	300	250	8	26	218	28	78,50	
DN 200	550	900	270	200	3	340	295	12	22	268	24	140,0	375	320	12	30	285	34	180,0	
DN 250	650	1100	370	250	3	405	355	12	26	320	32		450	385	12	30	345	38		

BATUSAN standartlar içerisinde kalarak; dizayn, konstrüksiyon ve malzeme değiştirme hakkına sahiptir.  
BATUSAN has rights to change for desing, construction and material of it's products with respect to standards