

# KÜRESEL VANA ( ÇELİK )

BALL VALVE ( STEEL )

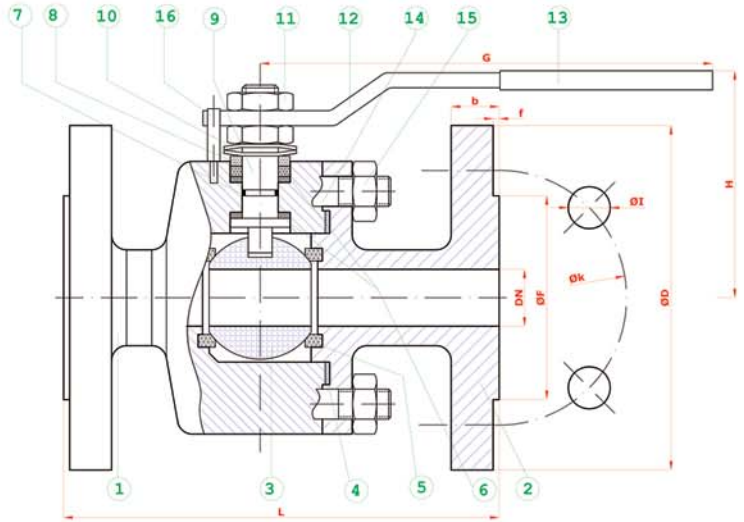
TAM GEÇİŞLİ / FLANŞLI  
FULL BORE / FLANGED

**TİP ( TYPE ) : BKV - FL - TG**  
**DN 15 - DN 200**

Boyutlar	Dimensions	: TS 3148 // EN 558-1 // DIN 3202 F 4-5
Bağlantılar	Connections	: FLANŞLI / FLANGED DIN 2545 // EN 1092-1
Çalışma Basıncı	Working Pressure	: PN 16 - PN 40
Çalışma Sıcaklığı	Working Temperature	: -30 °C // +180°C
Kullanım Alanları	Usage Areas	: Su, Sıcak Su, Buhar, Basıncı Hava Water, Hot Water, Steam, Pressurized Air



MALZEME BİLGİSİ MATERIAL DATA				
PARÇA NO. ITEM NO	ADET PCS	PARÇA ADI ITEM DESCRIPTION	MALZEME MATERIAL	
16	1	STOPLAMA PİMİ STOPPING PIM	ST 42 Gal.	.1.4301
15	8	SOMUN NUT	5.6	.1.4301
14	4	SAPLAMA STUD	4140-5140	.1.4301
13	1	PLASTİK KAPLAMA PLASTIC COVERING	PVC	PVC
12	1	KÜRE HAREKET KOLU BALL ACTION HANDLE	st 37	.1.4301
11	2	KONTRA SOMUN COUNTER NUT	5.6 Gal.	.1.4301
10	2	ÇANAK PUL BOWL WASHER	50 Cr V 4	.1.4301
9	1	HAREKET MİLİ ACTION SPINDLE	1.4021	.1.4301 / .1.4401
8	1	BASKI RİNGİ PRESSURE RING	MS 58	.1.4301 / .1.4401
7	1	MİL O-RING SPINDLE O-RING	VİTON	VİTON
6	2	BOĞAZ SIZDIRMAZLIK TEFLONU NECK TIGHTNESS ELEMENT	PTFE-Teflon	PTFE-Teflon
5	2	KÜRE SIZDIRMAZLIK TEFLONU BALL TIGHTNESS ELEMENT	PTFE-Teflon	PTFE-Teflon
4	2	GÖVDE SIZDIRMAZLIK TEFLONU BODY TIGHTNESS ELEMENT	PTFE-Teflon	PTFE-Teflon
3	1	KÜRE BALL	1.4301 / 1.4088	1.4301 / 1.4401
2	1	GÖVDE BODY	SAE 1020	.1.4301 / .1.4401
1	2	KAPAK COVER	SAE 1020	.1.4301 / .1.4401



TİP ( TYPE )	BOYUTLAR ( DIMENSIONS )								BAĞLANTI ÖLÇÜLERİ ( CONNECTION SIZES )										
	PN 16 - 40								PN 16					PN 40					
BKV FL-TG	L	G	H	DN	f	D	k	Hole Unit	I	F	b	Kg	D	k	Hole Unit	I	F	b	Kg
DN 15	115	150	75	15	2	95	65	4	14	45	14		95	65	4	14	45	16	3,2
DN 20	120	150	83	20	2	105	75	4	14	58	16		105	75	4	14	58	18	4,5
DN 25	125	180	90	25	2	115	85	4	14	68	16		115	85	4	14	68	18	5,7
DN 32	130	230	95	32	2	140	100	4	18	78	16		140	100	4	18	78	18	7,9
DN 40	140	275	115	40	3	150	110	4	18	88	16		150	110	4	18	88	18	10,9
DN 50	150	275	120	50	3	165	125	4	18	102	18		165	125	4	18	102	20	14,1
DN 65	170	320	135	65	3	185	145	4	18	122	18		185	145	8	18	122	22	20,9
DN 80	180	380	150	80	3	200	160	8	18	138	20		200	160	8	18	138	24	26,2
DN 100	190	450	170	100	3	220	180	8	18	158	20		235	190	8	22	162	24	38,7
DN 125	325	450	200	125	3	250	210	8	18	188	22		270	220	8	26	188	26	
DN 150	350	650	235	150	3	285	240	8	22	212	22		300	250	8	26	218	28	102,0
DN 200	400	900	270	200	3	340	295	12	22	268	24		375	320	12	30	285	34	

BATUSAN standartlar içerisinde kalarak; dizayn, konstrüksiyon ve malzeme değiştirme hakkına sahiptir.  
BATUSAN has rights to change for desing, construction and material of fit's products with respect to standards