

# CEKETLİ KÜRESEL VANA (ÇELİK)

JACKET BALL VALVE (STEEL)

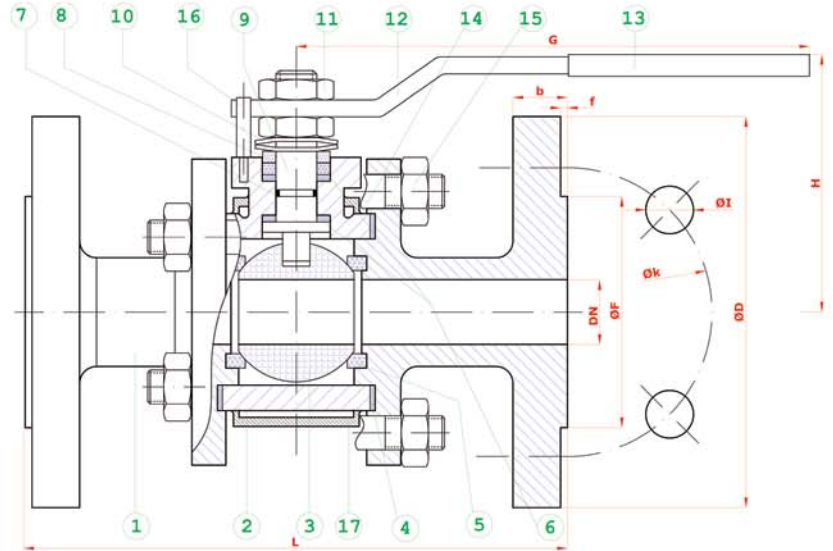
TAM GEÇİŞLİ / FLANŞLI  
FULL BORE / FLANGED

TİP (TYPE) : BKV-CEK-FL-TG  
DN 15 - DN 150

Boyutlar	Dimensions	: EN 558-1
Bağlantılar	Connections	: FLANŞLI / FLANGED PN 16; DIN 2533 // EN 1092-1 FLANŞLI / FLANGED PN 40; DIN 2545 // EN 1092-2
Çalışma Basıncı	Working Pressure	: PN 16 - PN 40
Çalışma Sıcaklığı	Working Temperature	: -30 °C // +180°C
Kullanım Alanları	Usage Areas	: Su, Sıcak Su, Buhar, Basıncılı Hava, Asfalt Water, Hot Water, Steam, Pressurized Air, Asphalt



MALZEME BİLGİSİ MATERIAL DATA			
PARÇA NO / ITEM NO	ADET / PCS	PARÇA ADI / ITEM DESCRIPTION	MALZEME / MATERIAL
17	1	CEKET / JACKET	SI 44 .1.4301 / 1.4401
16	1	STOPLAMA PİMİ / STOPPING PIM	ST 42 Gal. .1.4301
15	8	SOMUN / NUT	.5.8 .1.4301
14	4	SAPLAMA / STUD	Çk 35- Çk 45 .1.4301
13	1	PLASTİK KAPLAMA / PLASTIC COVERING	PVC PVC
12	1	KÜRE HAREKET KOLU / BALL ACTION HANDLE	st 37 .1.4301
11	2	KONTRA SOMUN / COUNTER NUT	5.8 Gal. .1.4301
10	2	ÇANAK FUL / BOWL WASHER	50 Cr V 4 .1.4301
9	1	HAREKET MİLİ / ACTION SPINDLE	1.4021 .1.4301 / 1.4401
8	1	BASKI RİNGİ / PRESSURE RING	MS 58 *
7	1	MİL O-RİNG / SPINDLE O-RING	VİTON VİTON
6	2	BOĞAZ SIZDIRMAZLIK TEFLONU / NECK TIGHTNESS ELEMENT	PTFE-Teflon PTFE-Teflon
5	2	KÜRE SIZDIRMAZLIK TEFLONU / BALL TIGHTNESS ELEMENT	PTFE-Teflon PTFE-Teflon
4	2	GÖVDE SIZDIRMAZLIK TEFLONU / BODY TIGHTNESS ELEMENT	PTFE-Teflon PTFE-Teflon
3	1	KÜRE / BALL	1.4301 / 1.4088 1.4301A / 1.4401
2	1	GÖVDE / BODY	A 216 WCB .1.4301 / 1.4401
1	2	KAPAK / COVER	SI 37-2 .1.4301 / 1.4401



TİP (TYPE)	BOYUTLAR (DIMENSIONS)					BAĞLANTI ÖLÇÜLERİ (CONNECTION SIZES)													
	PN 16 - 40					PN 16						PN 40							
BKV-CEK FL-TG	L	G	H	DN	f	D	k	Hole Unit	I	F	b	Kg	D	k	Hole Unit	I	F	b	Kg
DN 15	130	150	75	15	2	95	65	4	14	45	14		95	65	4	14	45	16	
DN 20	150	150	83	20	2	105	75	4	14	58	16		105	75	4	14	58	18	
DN 25	160	180	90	25	2	115	85	4	14	68	16		115	85	4	14	68	18	
DN 32	180	230	95	32	2	140	100	4	18	78	16		140	100	4	18	78	18	
DN 40	200	275	115	40	3	150	110	4	18	88	16		150	110	4	18	88	18	
DN 50	230	275	120	50	3	165	125	4	18	102	18		165	125	4	18	102	20	
DN 65	290	320	135	65	3	185	145	4	18	122	18		185	145	8	18	122	22	
DN 80	310	380	150	80	3	200	160	8	18	138	20		200	160	8	18	138	24	
DN 100	350	450	170	100	3	220	180	8	18	158	20		235	190	8	22	162	24	
DN 125	400	450	200	125	3	250	210	8	18	188	22		270	220	8	26	188	26	
DN 150	450	650	235	150	3	285	240	8	22	212	22		300	250	8	26	218	28	

BATUSAN standartlar içerisinde kalarak; dizayn, konstrüksiyon ve malzeme değiştirme hakkına sahiptir.  
BATUAN has rights to change for desing, construction and material of it's products with respect to standards